

QUOTATION OF DOLOMIT OJSC



The Open Joint Stock Company “Dolomit” invites companies operating in the construction industry, road construction, production of building materials, oil industry, glass production, metallurgy, agriculture to cooperate.

Dolomit OJSC is one of the largest enterprises in Europe for the quarrying and processing of dolomite raw materials, which has been operating in Vitebsk region of the Republic of Belarus for more than 90 years. The raw material base of the enterprise is the quarry “Gralevo”, the explored reserves of which amount to 710 million tons of dolomite. At present, Dolomit OJSC demonstrates the capacity to produce uncalcined dolomites in the form of powder in the amount of 3000.0 thousand tons, coarsely crushed dolomite - 2420.0 thousand tons per year.

MAIN TYPES OF PRODUCTS OF DOLOMIT OJSC

- **Crushed stone from dense rock (dolomite):**

- ✓ Manufactured in accordance with GOST 8267-93;
- ✓ Fraction size: 5-20 mm, 20-40 mm, 40-70 mm, 40-80 mm;
- ✓ Crushing grade: 600, 800;



- **Crushed stone (dolomite):**

- ✓ Manufactured in accordance with GOST 32703-2014;
- ✓ Fraction size: 4-16 mm, 8-16 mm, 16-31.5 mm; 31.5-45 mm, 31,5-63 mm;
- ✓ Crushing grade: M600, M800;

- **Crushed stone-sand mixtures C6, C12:**

- ✓ Manufactured in accordance with STB 2318-2013;
- ✓ Fraction size: 0-40 mm (C6), 0-10 mm (C12);
- ✓ Crushing grade: 600;



- **Unbound mixtures, dolomite crushed stone:**

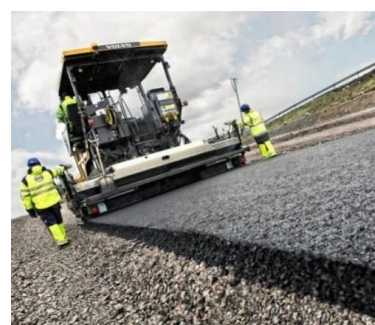
- ✓ Manufactured in accordance with EN 13285-2018;
- ✓ Fraction size: 0-45 mm;

- **Inactivated mineral powder MP-1 for asphalt-concrete and organo-mineral mixtures:**

- ✓ Manufactured in accordance with GOST 16557-2005;
- ✓ Grain grading:

smaller 1.25mm	smaller 0.315mm	smaller 0.071mm
100%	90%	70-80%

- ✓ Moisture content up to 1%;



- **Aggregate (mineral powder):**

- ✓ Manufactured in accordance with STB EN 13043-2007;
- ✓ Grain grading:

smaller 2mm	smaller 0.125mm	smaller 0.063mm
100%	85-100%	70-100%

- ✓ Moisture content up to 1%;



- **Dolomite aggregate:**

- ✓ Manufactured in accordance with STB 1417-2003;



- **Concrete aggregate:**

- ✓ Manufactured in accordance with STB EN 12620-2010;

- **Finely-powdered dolomite for concrete and mortar:**

- ✓ Manufactured in accordance with STB 2060-2010;

- **Limestone powder (dolomite):**

- ✓ Manufactured in accordance with GOST 14050-93;
- ✓ Grain grading:

screening residue		
5mm	3mm	1mm
0%	up to 1%	up to 3%

- ✓ Moisture content up to 1.5%;
- ✓ Effective specific activity of natural radioactive nuclides ~18 Bq/kg.



- **Dolomite powder for glass industry:**

- ✓ Manufactured in accordance with TS BY 300200623.002-2017;
- ✓ Grain grading:

screening residue					smaller
2mm	1mm	0.5mm	0.25mm	0.063mm	0.063mm
up to 1%	up to 24%	up to 25%	10-25%	25-35%	up to 20%



- **Raw dolomite for metallurgy:**

- ✓ Manufactured in accordance with TS BY 300200623.001-2012;
- ✓ Fraction size: 5-20 mm, 20-40 mm, 40-80 mm;
- ✓ Mass fraction of MgO is up to 19%;
- ✓ Mass fraction of SiO₂ is up to 3%;
- ✓ Mass fraction of Al₂O₃+Fe₂O₃ is up to 1/5%;
- ✓ Effective specific activity of natural radioactive nuclides ~17 Bq/kg;



Current information on manufactured products is presented on the website www.dolomit.by.
 HS code is 2517102000: limestone, dolomite and other limestone stones, broken or crushed.
 Shipment of products of Dolomit OJSC is carried out by road or rail.
 Pricing basis - FCA, DAP. A system of discounts is in effect.

**With hope for long-term mutually profitable cooperation,
 Dolomit OJSC**

Tsentralnaya str., 23., 210012, Vitebsk, Republic of Belarus
www.dolomit.by, e-mail: info@dolomit.by,
 tel./fax: +375 212 69 19 49

Marketing and sales department

e-mail: sbyt@dolomit.by, tel./fax + 375 21 269 37 76,
 mobile +375 29 771 00 10 Viber, WatsApp, Telegram